



installing office 365 for PC



Step 1



Navigate to Office365 website:
www.memphis.edu/getoffice

Step 2



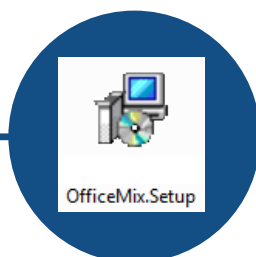
**Log in with UofM email
and password via Single
Sign on (SSO) and
Authenticate with DUO.**

Step 3



Click Install Now

Step 4



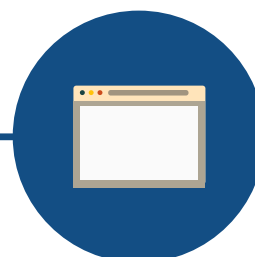
**Double click DMG to
install**

Step 5



**Do not pause or stop the
process during install**

Step 6



**Once installation is
complete, sign in with
UofM email & password.**



Information
Technology Services