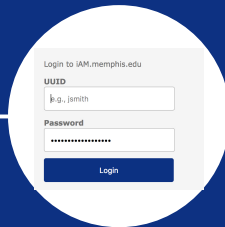


Using Duo Mobile App

Duo Mobile

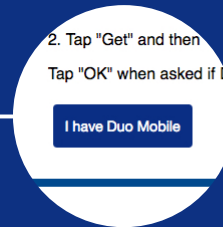


Download & install Duo Mobile App on Phone or tablet from Google Play Store or Apple Store.



Log into
<https://iam.memphis.edu>

Note: *If you cannot log into iAm, you will need to contact the Service Desk for assistance.*



Tap **I have Duo Mobile**



Launch Duo App. Tap the **+ button** on **IOS** or **Add Account** for Android or tablet then scan QR code

Once the bar code has been scanned, you are ready to use Duo Account Security.

For more detailed instructions, please see our DUO Page.

You're Connected!



Information
Technology Services