



# *Eights*

**November 15, 2018**



# St8 of Fr8 in the St8

November 15, 2018

# Freight Movement - Today





- What is the current environment of freight?



# Freight

## Freight Movement is Multimodal

Every mode of transportation moves freight, but trucking is the primary mode of freight travel.

	2013	(in tons)	2040
 Truck	14 billion	+35%	18.8 billion
 Rail	1.9 billion	+49%	2.8 billion
 Waterborne	808 million	+32%	1.1 billion
 Air	15 million	+263%	53 million

**55**  
million tons  
of freight  
move across  
our nation  
every day

Source: *Beyond Traffic*

# Why Is Freight so Important to Tennessee?

## Freight Alley

A region where **logistics contributes to more than 40% of the economy**. Freight Alley is an area that roughly defines freight traffic moving throughout the southeastern US, particularly in **Tennessee, South Carolina, North Carolina, Georgia, and Alabama**. For years, the region has been a manufacturing powerhouse and in no-small coincidence a major distribution and logistics region. We have named this region Freight Alley because of the importance logistics and transportation plays in the region and how important the region is to the North American logistics map. According to the latest census data, 37 million people calls this area home (the Canadian population is 36.29 million). Also, interesting enough, the GRP (Gross Regional Product) of Freight Alley is \$1.75 trillion, slightly higher than the GDP of Canada at \$1.53 trillion.

# Freight & Logistics

Tennessee leads the nation in distribution

Rail – 6 out of 7

River – 5<sup>th</sup> largest inland port

Runway – largest North American airport

Road – major thoroughfares

It spurs two other growth areas that are critical to Tennessee:

Tourism & Economic Development



# Freight Movement - Today

- What is the current environment of freight in Tennessee?



# So why is it important?

Tennessee population growth expected to grow by 2.1 million by year 2040. Expected 34% growth!

Two million more jobs by 2040

90% growth in population (age 65+) by 2040





## Memphis Freight Construction – *MemFix4*

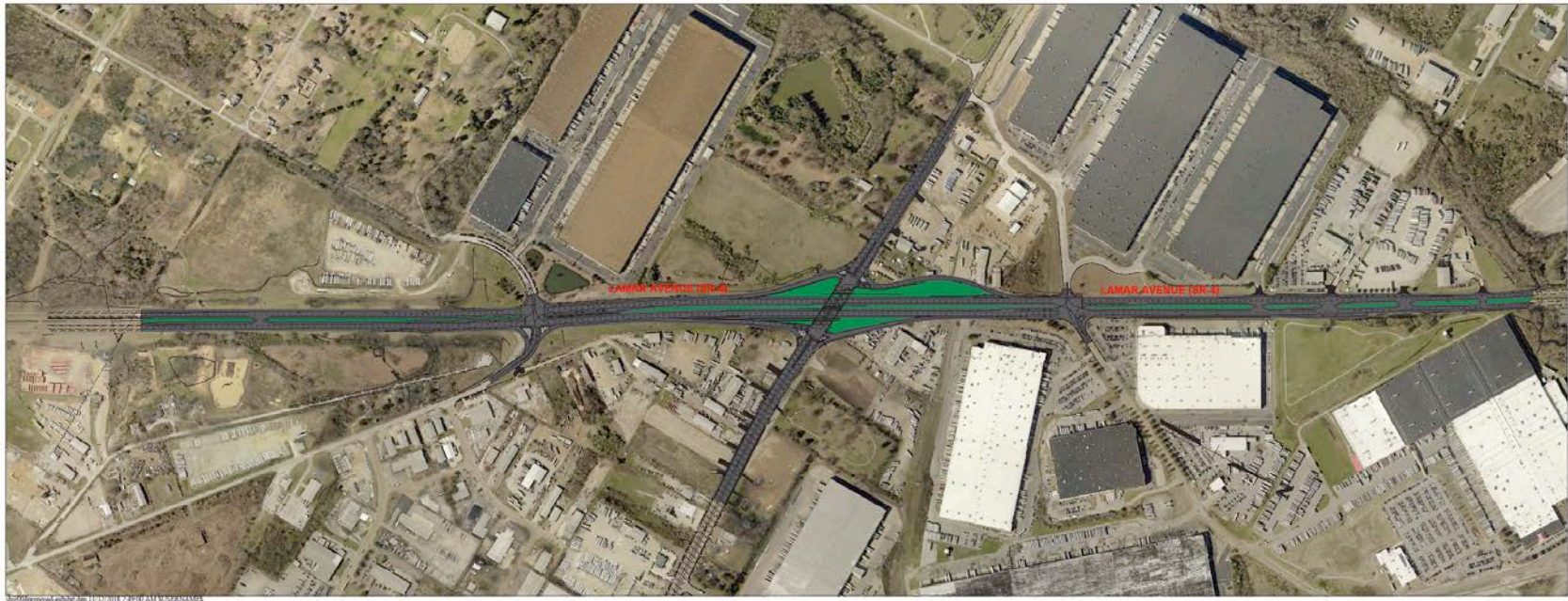
- Replace four bridges: Poplar East, Poplar West, Park, NS Railroad
- Example of Accelerate Bridge Construction
  - Closure 9 to 12 Weekends
- Completion Date: On Target for June, 2019



# Memphis Freight Construction – *Lamar Corridor*

- 3 Phases from State line to Getwell Road
  - Southern Phase (State line to south of Shelby Drive)
    - \$62.8 million
    - Utility work
    - Construction in the Spring
    - Completion Date November 30, 2021
  - Middle Phase (South of Shelby to Raines/Perkins Road)
    - 1.9 miles in length
    - ROW - \$150 million
    - CN in 2021
  - Northern Phase (Raines/Perkins Road to Getwell)
    - 1.8 miles in length
    - ROW in 2019

# Lamar Phase 1



# Memphis Freight Construction – *I-240 / Airways*

- Should go to Construction in 2020
- Estimated timeline end of 2023
- Traffic will be safer and more efficient

# Freight Concerns / Opportunities

- Congestion Issues
- Resiliency
- Truck Parking
- Rail Connectivity Competitive Grant
- Technology impacts
- Multi-modal supply chains in the future
- First mile / last mile
- *You want it when?*

# Freight Example – Multimodal Oppty

Outside the box thinking: COB (Total Supply Chain)



*Seacor in Memphis / Photo by Dan Pallme*

# Contact Information

Dan Pallme, Assistant Chief of Freight & Logistics  
Environment & Planning Bureau

615-741-4031 office

615-879-4390 cell

[Daniel.pallme@tn.gov](mailto:Daniel.pallme@tn.gov)

*Let me know if you know others that want to be included on our freight contact list.*