

Contract Furniture Dealers

Campus Planning + Design



THE UNIVERSITY OF
MEMPHIS®

APG Office Furnishings: 901-363-9020

Website: www.apgof.com/

Herman Miller Dealership

Rep.: Gayla Hobbs

Spaces Group Inc.: 901-348-4600

Website: <http://www.spacesgrp.com/>

Knoll Dealership

Rep.: Carol Johnson

OfficeScapes: 901-385-8000

Website: www.surfosi.com/

Haworth Dealership

Rep.: Eric Walker

Memphis Business Interiors: 901-360-8899

Website: www.gombi.com/

Steelcase Dealership

Rep.: Jessica Chamberlain

Office Interiors of Memphis: 901-372-0023

Website: www.oimemphis.com/

HON Dealership

Rep.: Curt Carie

Business Interiors by Staples: 901-482-2133

Website: www.staplesadvantage.com/businessinteriors

Global Dealership

Rep.: David Knight

Note: All furniture dealers listed, offer government contract pricing discounts from one of the following contracts; NJPA, National IPA, TCPN and US Communities.

For expenditures greater than \$5,000.00 please place a work order here...

<http://bf.memphis.edu/pp/worq.php>

All purchases will include a 10% design fee per UM Policy 1770.

Please see UM Policy 1770: Facilities and Ground Alterations and Improvements for more information about facilities and ground alterations and improvements at the University of Memphis.

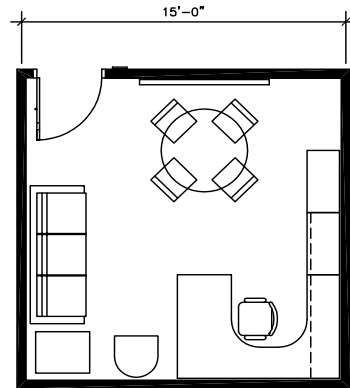
<http://umwa.memphis.edu/umpolicies/UM1770.htm>

Typical Space Allocations and Layouts per Title

Campus Planning + Design

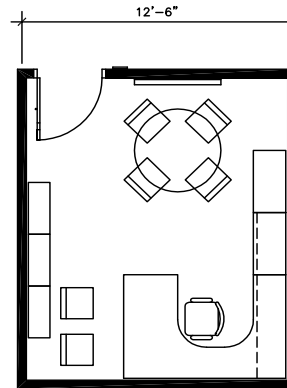


THE UNIVERSITY OF
MEMPHIS®



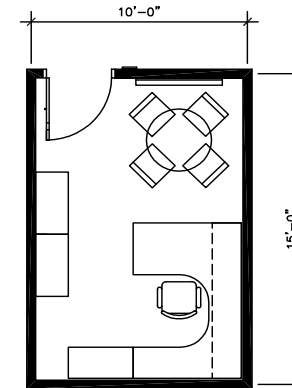
220 SF Office Standard

Assistant Vice President, Dean
(225 SF Indicated)



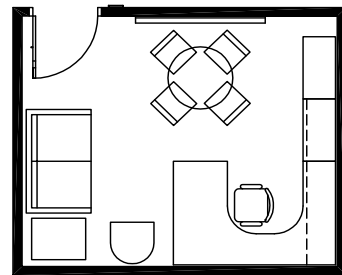
180 SF Office Standard

Associate Dean, Director
(188 SF Indicated)



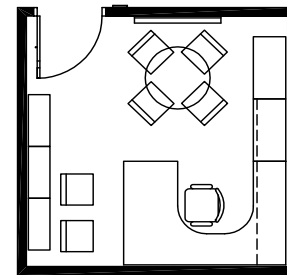
150 SF Office Standard

Assistant Director, Associate Director, Manager



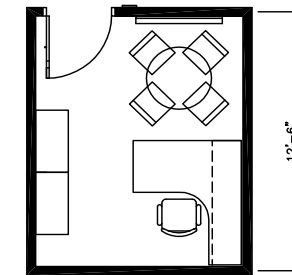
180 SF Office Standard

Associate Dean, Director
(188 SF Indicated)



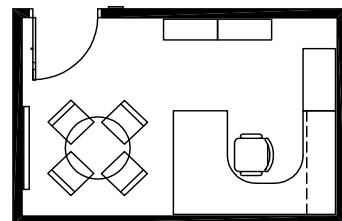
150 SF Office Standard

Assistant Director, Associate Director, Manager
(156 SF Indicated)



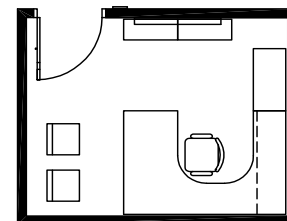
120 SF Office Standard

Professional
(125 SF Indicated)



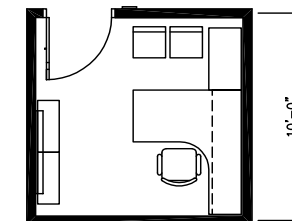
150 SF Office Standard

Assistant Director, Associate Director, Manager



120 SF Office Standard

Professional
(125 SF Indicated)



100 SF Office Standard

Technician, Analyst, Coordinator,
Secretary, Technical Clerk

Furniture Options by Price

Campus Planning + Design



THE UNIVERSITY OF
MEMPHIS®



HON

Economical: HON®- <http://www.hon.com/>



HAWORTH®

Median: Haworth®- <http://www.haworth.com/home>



ofs

Executive: OFS- <http://www.ofs.com/products/casegoods>

Note: All manufactures listed have contracted pricing and approved 5 to 10 year warranties.

Carpet Standards

Campus Planning + Design



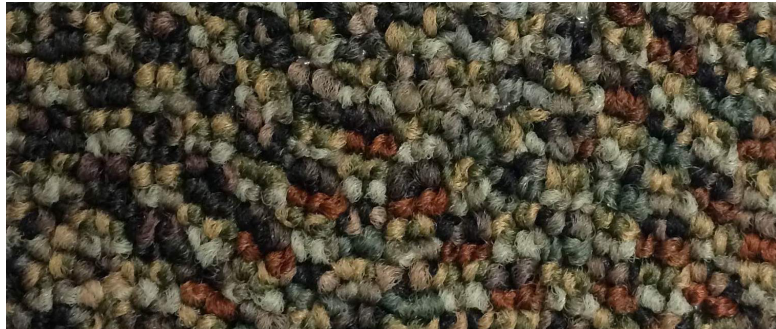
THE UNIVERSITY OF
MEMPHIS

Specifications:

Manufacture: Mannington Commercial Carpet

Pattern: Carthage Legacy

Type: Broadloom or Tile **Weight:** 20 oz.



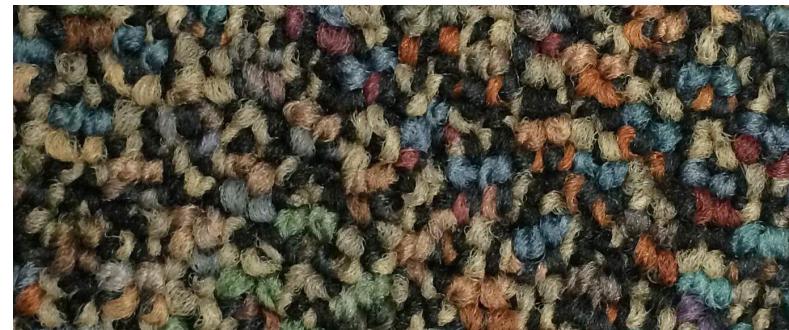
COLOR: Ellington



COLOR: Bridge Creek



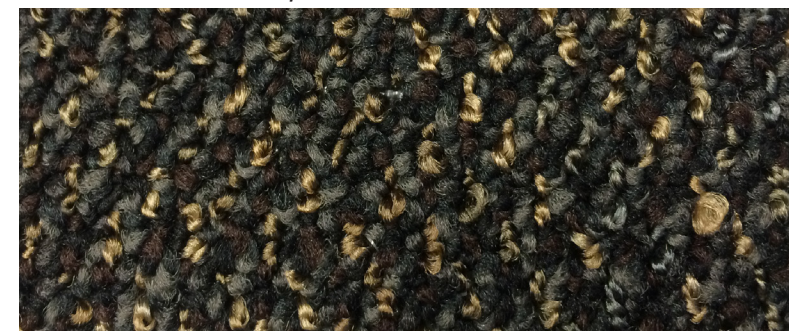
COLOR: Cantera Pointe



COLOR: Mediterranean Manor



COLOR: Crest Valley



COLOR: Onyx

Wall and Accent Color Paints

Campus Planning + Design



THE UNIVERSITY OF
MEMPHIS®

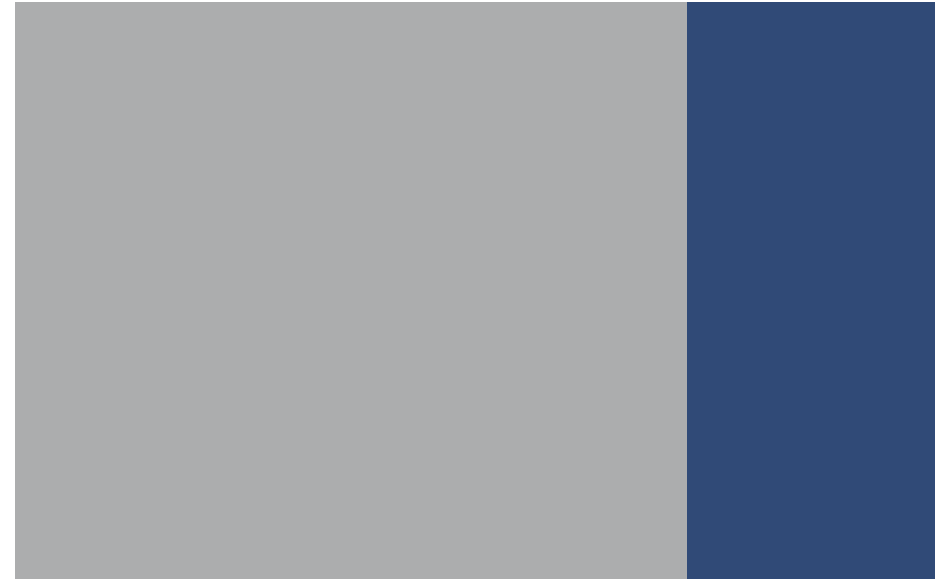


Wall Color: Fog: PPG 1010-2

Accent Wall Color: Dragonfly: PPG 1162-7

Manufacture: Porter Paints

Sheens: Flat and Egg-shell



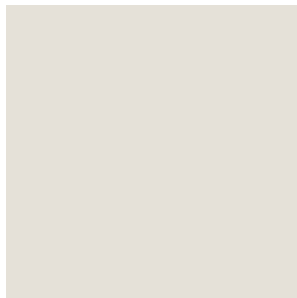
Wall Color: Flagstone: PPG 1001-4

Accent Wall Color: Dragonfly: PPG 1162-7

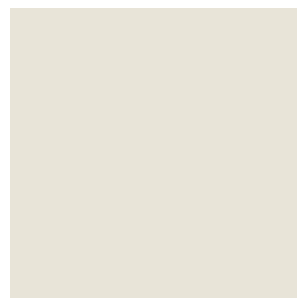
Manufacture: Porter Paints

Sheens: Flat and Egg-shell

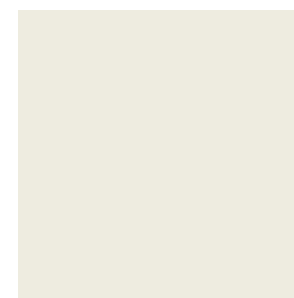
Neutral Wall Color Options:



Wall Color: Toque White SW 7003
Manufacture: Sherwin-Williams
Sheens: Flat and Egg-shell



Wall Color: Ivory Lace SW 7013
Manufacture: Sherwin-Williams
Sheens: Flat and Egg-shell



Wall Color: Alabaster SW 7008
Manufacture: Sherwin-Williams
Sheens: Flat and Egg-shell

Lighting and Dimmer Standards

Campus Planning + Design



THE UNIVERSITY OF
MEMPHIS®



Manufacture: Cree
Series: ZR
Lamp Type: LED



Manufacture: Lithonia Lighting
Series: FS
Lamp Type: LED



Manufacture: Philips/Day-Bright
Series: Arioso
Lamp Type: CFL



Manufacture: Cree
Series: Smartcast
Color: White



Manufacture: Acuity
Series: SPODMRD
Color: White



Manufacture: Lutron
Series: Diva
Color: White

Whiteboard and Tackboard Standards

Campus Planning + Design



THE UNIVERSITY OF
MEMPHIS®



Manufacture: Claridge
Series: LCS Deluxe
[With or without tack rail]
Sizes: 3'x4', 4'x4', 4'x6',
4'x8', 4'x10' and 4'x12'



Manufacture: Claridge
Series: 800
Colors: Contact designer
Sizes: 3'x4', 4'x4', 4'x6',
4'x8', 4'x10' and 4'x12'